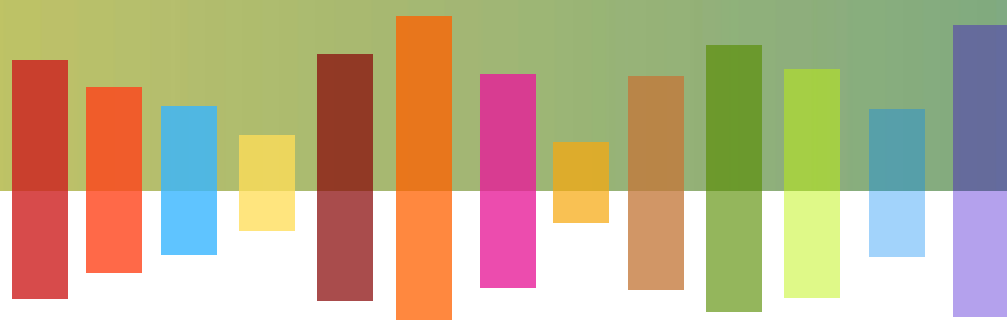


FAST-TRACKING THE SDGs: DRIVING ASIA-PACIFIC TRANSFORMATIONS

THEME REPORT FOR THE ASIA-PACIFIC FORUM ON SUSTAINABLE DEVELOPMENT, 2020

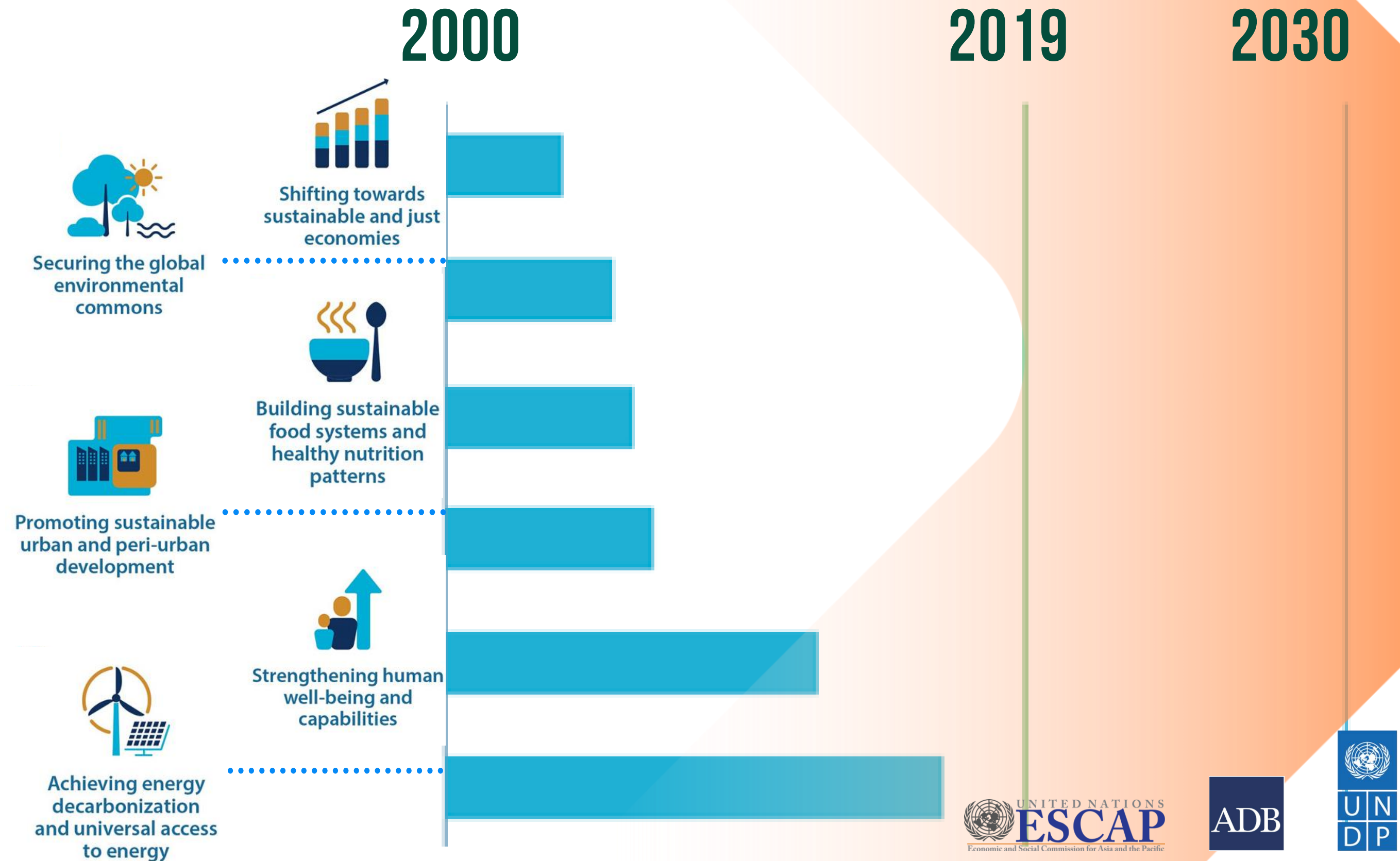


Asia-Pacific
SDG Partnership



THE CASE FOR ACCELERATING TRANSFORMATIONS

Progress on harnessing the six transformative entry points



ANALYZING COUNTRY PROGRESS FOR THE SIX ENTRY POINTS

Quadrant analysis



- How does each country's performance (speed/level) **compare with regional averages** ?
- What are the **relationships between entry points** (in terms of countries' track records) ?
- What can we **learn from the fastest-moving countries** ?

INSIGHTS

- **Income is not a silver bullet**
- Countries with special needs can progress relatively quickly
- There are **strong synergies in performance** across entry points
- **Trade offs between entry points are not statistically significant - possible to manage**
- **Last-mile challenges - slow progress in the "last-mile" and complex** issues, even for advanced economies

ACCELERATING TRANSFORMATION



Set direction &
mobilize stakeholders,
partnerships



Policy-making
that allows for
managing complexity



Systemic shifts to
remove barriers &
re-align



Ready people and
institutions to sustain
change

FINAL MESSAGES

- **We face increasing complexity in the policy landscape, a test of governance and of commitment to leaving no one behind.**
- **Government capacity to direct and manage change will be critical for our ability to deliver on the SDGs.**
- **This report can help each country understand where it stands on the path to transformation.**
- **The report also highlights opportunities to strengthen mission-orientation towards the 2030 Agenda in the context of the COVID-19 response and beyond.**
- **The four building blocks and six transformative entry points can frame recovery efforts that aim for systemic change.**

SEE THE REPORT, OTHER KNOWLEDGE PRODUCTS & SDG DATA

[HTTPS://SDGASIAPACIFIC.NET](https://sdgasiapacific.net)

